

(35)

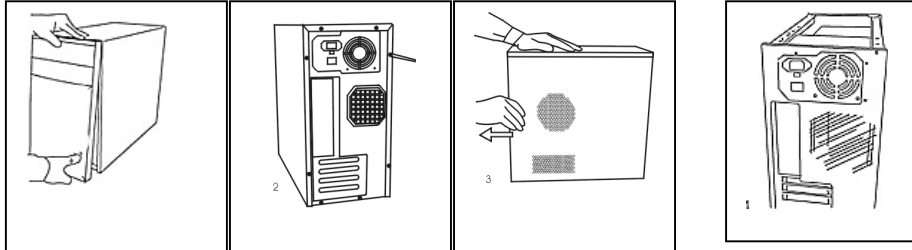
# microATX MINI TOWER

## TECHNICAL INSTRUCTION

### Opening the case:

Pull out the front panel

Take off 2pcs screws; pull the left side cover from the rear side.



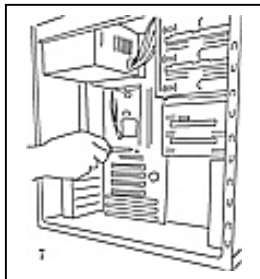
Find the accessory kits inside of chassis, to assembly system with next steps:

#### 1. Power supply (optional) installation:

Putting the power supply on tray, screw in for fixing

#### 2. M/B installation:

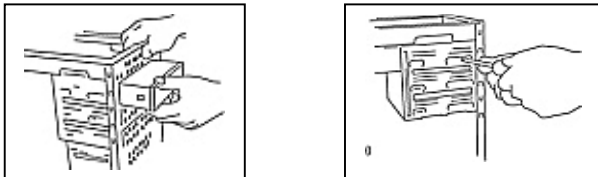
Install I/O shield (putting from inside of case). Finding correct mounting hole for M/B, screw in standoffs. Fasten M/B with the screw. Install add-on-cards.



#### 3. CD-ROM installation

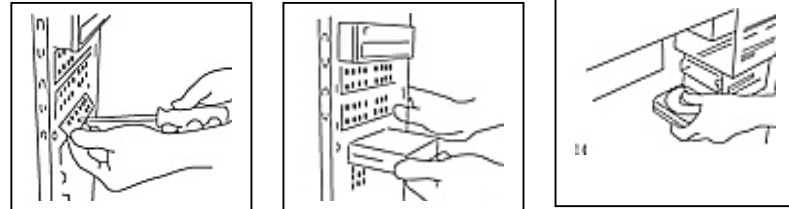
Pulling out the metal 5.25" cover with screwdriver. Slid in drive from front side into case.

Screw in drive



#### 4. 3.5" floppy/hard disk installation:

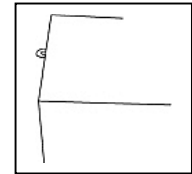
Slid in drive from front side into case. Screw in the drive. Hidden FDD bay: Install FDD without removal of FDD bezel.



#### 5. Application of lock plate

Screw in the lock plate

Apply a lock (optional) to secure the case

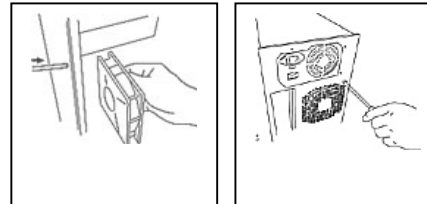


#### 6. System cooling fan (optional)

An 8cm fan could be screw in front plate.

Another 6cm fan could be screw in rear side.

Locate the fan inside of chassis, screw in from outside chassis



#### 7. Routing cables

#### 8. Close the chassis

Slide in the left side cover, fixed with 2pcs screws.

Snap in front panel without screw.