

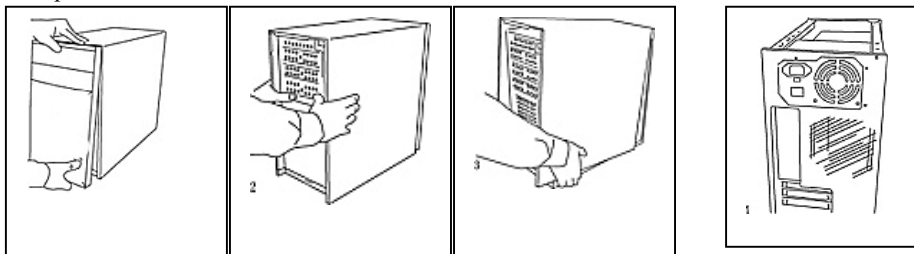
MIDDLE TOWER

TECHNICAL INSTRUCTION

Opening the case:

Pull out the front panel

Lift up top cover to take off from front side. Take off 3pcs screws, pull top cover to front side and lift up.



Find the accessory kits inside of chassis, to assembly system with next steps:

1. Power supply (optional) installation:

Putting the power supply on tray, screw in for fixing

2. M/B installation:

If the chassis come with an optional air guide, you have to remove it before install M/B.

How to remove air guide: Please lift up the clip and push forward.

Install I/O shield (putting from inside of case).

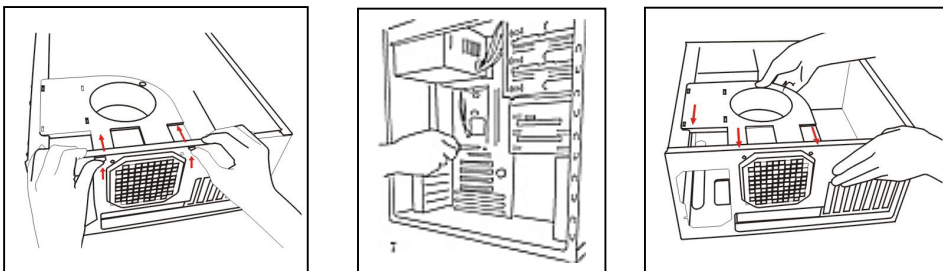
Finding correct mounting hole for M/B, screw in standoffs. Fasten M/B with the screw.

Install add-on-cards, CPU, RAM and mounting cables

Install the air guide.

* Air Guide Function: To improve airflow efficiently get through processor area, in the meanwhile, a system fan is suggested to mounted in the rear side of chassis.

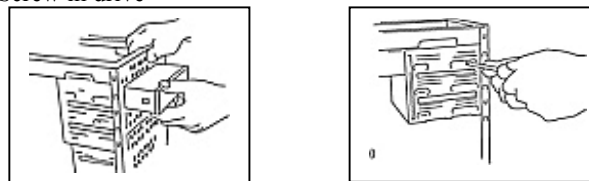
* Thermal solution should be depends on system configuration.



3. CD-ROM installation

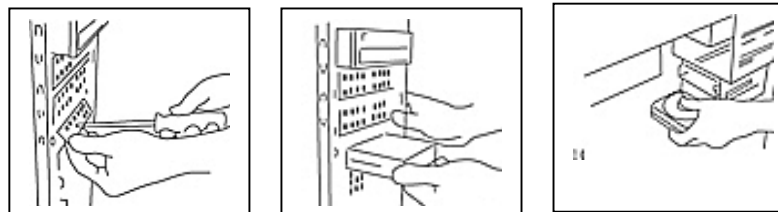
Pulling out the metal 5.25" cover with screwdriver. Slid in drive from front side into case.

Screw in drive



4. 3.5" floppy/hard disk installation:

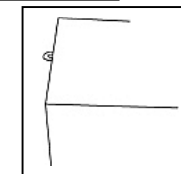
Slid in drive from front side into case. Screw in the drive. Hidden FDD bay: Install FDD without removal of FDD bezel.



5. Application of lock plate

Screw in the lock plate

Apply a pad lock (optional) to secure the case

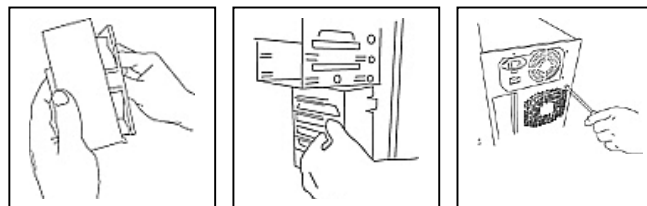


6. System cooling fan (optional)

Two 12cm fans could be screw in front plate and/or rear side.

Front one: Squeeze a fan into fan bracket

Rear one: Locate the fan inside of chassis, screw in from outside chassis



7. Routing cables

8. Close the chassis

Slide in top cover from front side to rear side, fixing with 3pcs screws.

Snap in front panel without screw.

