

ATX Performance Tower "Sirius" YY-5801

Patent Design for SATA HDD Easy Access



Built in SATA port for HDD easy access



Safe place for mobile device with USB connected



support 2.5" or 3.5" SATA HDD

SATA HDD Easy Access - how to connect

- ✓ Installation must refer to the relevant device manual on the use of SATA-related connection settings.
- ✓ to connect the SATA cable to SATA port on Motherboard, RAID card or adapter card. And connect the power in with power supply directly.



What's the advantage of SATA/eSATA drives over USB/IEEE1394 drives?

theoretical transfer rate:

USB2.0 480Mb/s (= 60MB/s)

SATA2.0 3Gb/s (= 384 MB/s)

SATA1.0 1.5Gb/s (=192MB/s)

What's the advantage of SATA HDD Easy Access port over eSATA port?

To use eSATA port, the removable HDD needed power adapter individually. With SATA HDD Easy Access port, User may directly use SATA HDD without additional power adapter.

Q: Does SATA HDD Easy Access support Hot swap?

A: Proposal was to swap SATA HDD after turn off the system.

What's the problem hot-swapping the drives without first removing them?

Windows doesn't expect the drive to be removed therefore the volume and the files may get corrupted if the drive is removed inappropriately. The followings are the typical system events indicating the problem.

"{Delayed Write Failed} Windows was unable to save all the data for the file . The data has been lost. This error may be caused by a failure of your computer hardware or network connection. Please try to save this file elsewhere."

"The system failed to flush data to the transaction log. Corruption may occur."

"The device disappeared from the system without first being prepared for removal."

~ Above content available from http://mt-naka.com/hotswap/index_enu.htm


Q: How to implement SATA HDD hot swappable feature?

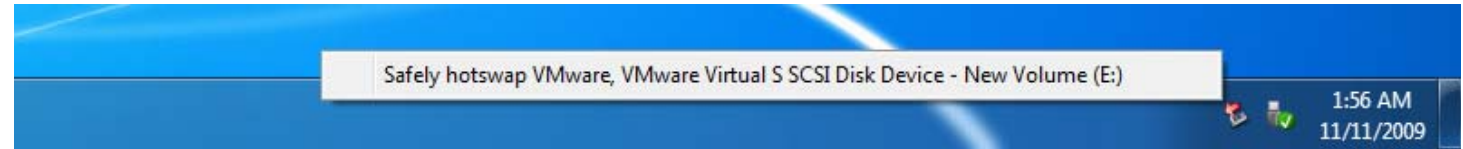
A: ✓ To support SATA HDD hot swappable or not, depends on system configurations' capabilities, such as OS, motherboard, HDD, RAID card, or adapter which supply the SATA port for connecting.

✓ It does the same thing as you can remove device from Device Manager but it provides much friendly user interface as you remove the removable device from the "Safely Remove Hardware" icon in the notification area. It also ensures that all data are written and flushed to the disk before the device to be hot-swapped, so you can use SATA drive as a removable device much alike USB drive. There is third-party freeware could be found to manage the SATA HDD's SWAP. For example http://mt-naka.com/hotswap/index_enu.htm.

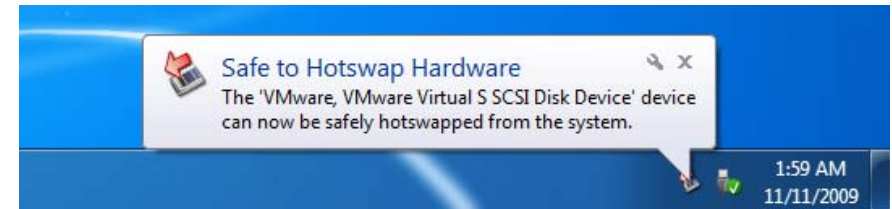
✓ Non-WINDOWS OS please refer to OS' reference document or the applicable third-party software to manage SATA HDD's SWAP.

Directions for use

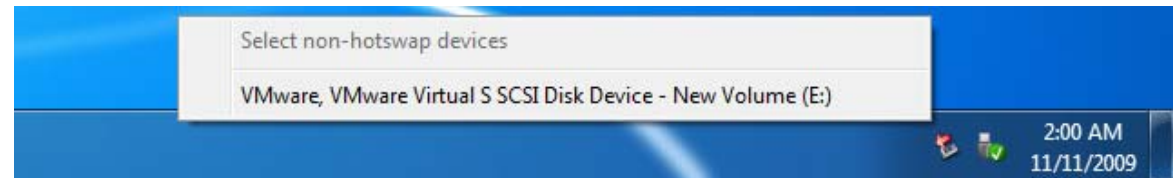
Extract the downloaded file and run HotSwap!.EXE, the icon  will appear in the notification area. The program will automatically start up when user logs on. Left click the icon, a menu will pop up listing drives.



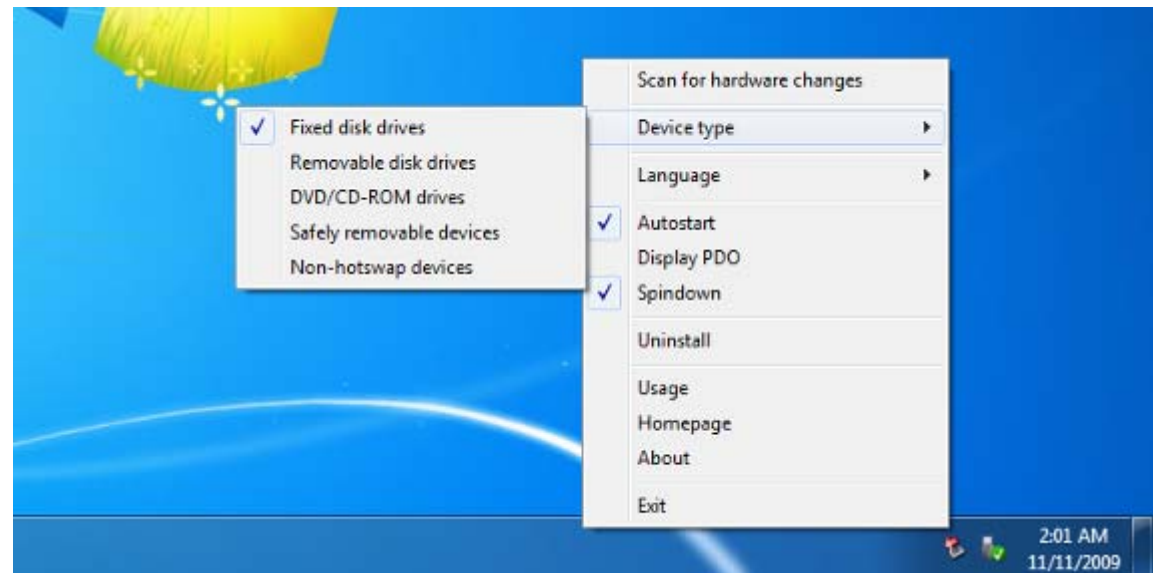
To remove a drive, select the drive from the popup menu. A balloon will pop up saying that the device is safely hot-swapped and you can power off the drive to remove it from the system. The drive listed in grey is either selected as non-hotswap device or in use by Windows therefore cannot be removed.



Left click the icon while pressing Ctrl key, another menu will pop up and you can select a drive. Once the drive is selected in this menu, it won't appear in the drive listing menu.



Right click the icon, the configuration menu will pop up.



Thanks Kazuyuki Nakayama, the host of http://mt-naka.com/hotswap/index_enu.htm.

Above information is published under his agreement. Please visit the web site and keep update.

