

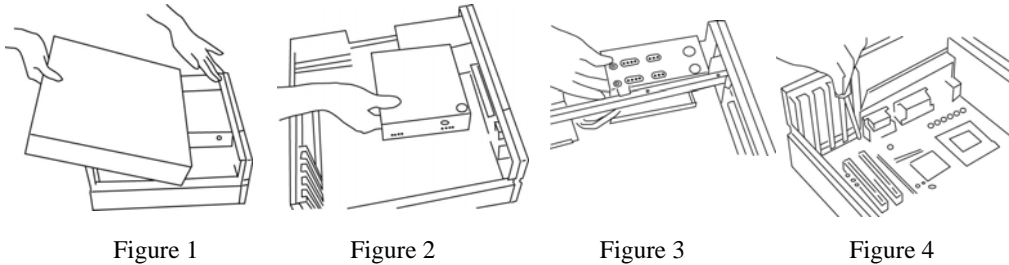
Tiny Tower for microATX

TECHNICAL INSTRUCTION

6 Steps to do System Assembly:

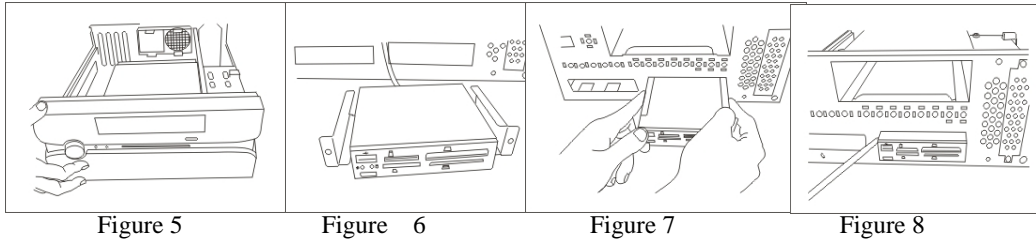
Step 1) Chassis Opening:

Detach left side cover (top cover) from chassis. Take off 3 pcs screws, pull out top cover from rear side and left up. (See Figure 1) Find the accessory kits inside the chassis to assemble the system.



Step 2) M/B Installation:

- 2.1) Remove the 5.25" CD-ROM and 3.5" HDD brackets. (See Figure 2,3)
- 2.2) Install I/O shield (from inside of case). Find the correct mounting hole for M/B, screw in standoffs, fasten M/B with the screw. (See Figure 4)
- 2.3) Install add-on-cards.



Step 3) 3.5" CARD READER Installation:

Notice: The 3.5" exposed drive bay in this case is designed for shorter device, for example a CARD READER, the standard depth of Floppy Drive may not allowed, if the M/B is in standard size too. Stronger suggest to install the device not more than 110mm depth.

- 3.1) Remove the front bezel (Figure 5)
- 3.2) Use the FDD brackets which packed in the accessories kits. R for right side, L for left side, hold the card reader and slide from front into case (See Figure 6, 7)
- 3.3) Screw on the brackets to chassis (See Figure 8)

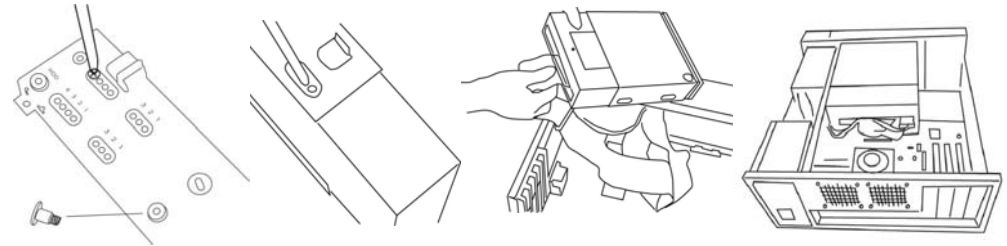


Figure 9

Figure 10

Figure 11

Figure 12

Step 4) 3.5" HDD Installation:

- 4.1) Mount the HDD into the 3.5" bracket. Screw in the HDD. (See Figure 9)
- 4.2) Slide in the 3.5 " bracket from inside into case.

Step 5) CD-ROM Installation:

- 5.1) Fasten the CD-ROM on the 3rd hole of the bracket. (See Figure 10)
- 5.2) Before slide in the CD-ROM bracket, connect and routing the cables. (See Figure 11, 12)
- 5.3) Slide in the CD-ROM. screw on the 3.5" bracket and frame.(See Figure 13, 14)

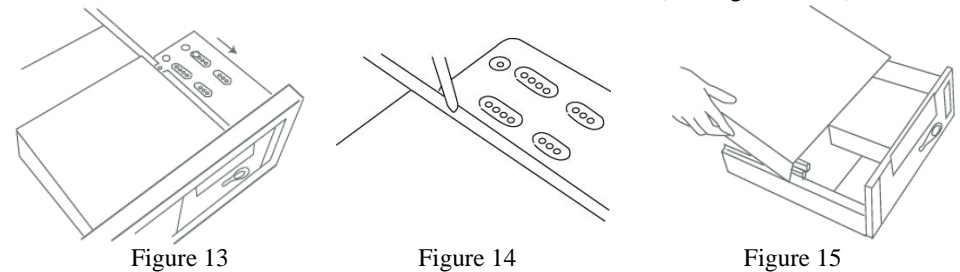


Figure 13

Figure 14

Figure 15

Step 6) Chassis Close:

Slide in the top cover from the rear to the front, fixed with 3 pcs screws. (See Figure 15)
Install front bezel as the reverse way as to remove it (See Figure 5)

Optional Parts:

Intrusion switch: The chassis could be built with intrusion switch (See Figure 16)

System cooling fan: 2x 6cm fans can be screw in the back plate. (See Figure 17)

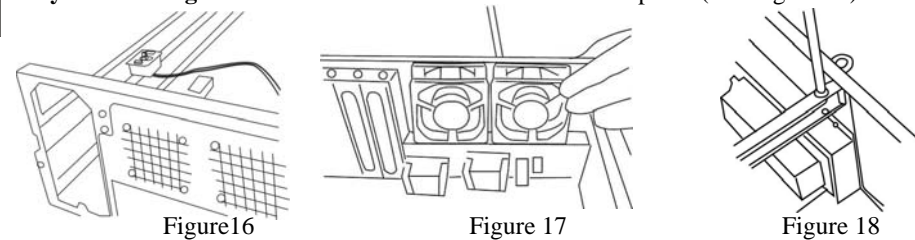


Figure 16

Figure 17

Figure 18

lock plate: Screw in the lock plate. Apply a lock (optional) to secure the case (See Figure 18)

Note: This chassis is applicable for Flex ATX Motherboard as well.

ZZ17-A211-A