



YY-R42x

19" Rackmount Chassis Technical Instruction



YY-R230 2U19"IPC Depth 26"/660mm

I. INTRODUCTION

1. This Cabinet

YY-R4 series 4U 19" rackmount cases, are designed for supplying the best solution of thermal, anti-vibration, EMI and user-friendly and safety for various industrial, business server and telecommunication applications.

2. Component Checklist

Standard Components

- ◆Chassis YY-R420/R421
- ◆ATX rear window 7 slots
- ◆Cooling Fan 9cm ball bearing cooling fan, 1pce

Optional Components

- ◆Power Supply PS2 PSU or Mini Redundant PSU
- ◆Cooling Fan 9cm fan*1pce, 6cm fan*1pce
- ◆Rear Window for 14 slots passive backplane







3. R series Reference

YY-R420 4U19"IPC Depth 18"/450mm
YY-R421 4U19"IPC Depth 21"/530mm
YY-R430 4U19"IPC Depth 26"/660mm
YY-R210 2U19"IPC Depth 18"/450mm
YY-R211 2U19"IPC Depth 21"/530mm



II. System Assembly and Disassembly

1. Screws/kits

	Descriptions	Q'ty	Purpose
	Screw Hex Head 6#4.5mm	17pcs	HDD, M/B
	Screw Flat Head 6#5mm	4pcs	Spare
	Screw Flat Head 4.9x10.5TPNi	8pcs	Fan
	Screw IOZT M4x6mm ISONi	8pcs	Slides
	Screw Flat Head 4x7mm ISOB	8pcs	Rackmount L bracket
	Screw IOZT M3x6mmSTPNi	20pcs	CD ROM, FDD
	Metal standoffs 5x6.35/6#32	9pcs	M/B
	Nylon Spacer ACBS-6	6pcs	M/B
	Rubber Stands	4pcs	Desktop
	Cable tie FWA-17	3pcs	Cable mounting



2. Control Panel

A.Power LED

B.HDD LED

C.Power alarm buzzer reset

D.Power Switch

3. System assembly steps



3.1. To remove top cover

Loose screws, pull it back and lift up





3.2. Motherboard installation

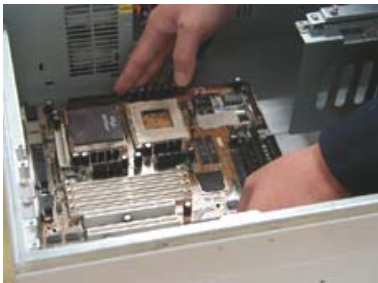
Remove the PCI card clamp holder first.



Check motherboard's mounting position, install the metal standoffs into mounting plate.



Install spacer into motherboard.



To mount motherboard onto the mounting plate, screw in.



3.3. Power Supply Installation

PS2 power supply: To place the power supply on position and tighten the back of power supply with (3) screws.



Mini redundant power supply: To screw off the bracket for PS2 power supply.

Place power supply on position and tighten the back of power supply with (4) screws.



3.4. 5.25" CD ROM assembly

Loosen (4) screws, pull backward and lift up the 5.25" driver bracket. To remove the metal cover, Install CD-ROM from front side, mount CD-ROM into the bracket.



3.5. HDD assembly

Loosen (4) screws from right side of chassis.

Remove the 5.25" driver bracket and its right ass'y kits.

To screw off (2) screws of HDD bracket.

Lift out the HDD bracket.

Mount HDD into the bracket.

Assemble the HDD bracket with (2) screws on the top side of bracket and (4) screws from right side of chassis.





3.6. FDD (or HDD) installation

Under the 5.25" driver bracket, there is a FDD bracket, which allow to mount FDD or HDD.

Screw off the FDD bracket and pull it backward.



Mount FDD or HDD with (4) screws in correct position.

Slide the FDD bracket into 5.25" bracket.



3.7. FDD (or HDD) installation

The vertical FDD bracket allows HDD or FDD assembly.

To screw off the FDD bracket, pull backward the bracket.



Mount FDD (or HDD) into the bracket with (4) screws.

Slide the bracket in its position and tighten it with (1) screw.





3.8. Cooling fan Dis/Assembly

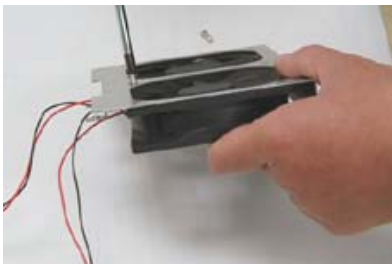
One 9cm ball bearing fan is mounted as standard package.

Screw off (2) screws on the top of fan holder.



Lift up the fan holder.

Assemble cooling fan with (4) screws.



3.9. Add-on-card installation;

Assembly of the Clamp on

Remove the bracket of tailgate, Install add-on-card.



To avoid shock of add-on-card, a clamp could be fixed in the best position, there are two position could be chose.

Fix the clamp on the best position for add-on cards with (2) screws.



Adjust the holder's hi-low by thumbscrew.

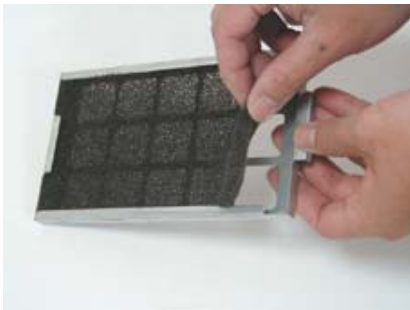




3.10. Cleaning of fan filter

Open the front door by key.

Slide out the fan filter for cleaning.



(R422)

19"4U Rackmount Chassis

TECHNICAL INSTRUCTION

System Assembly: Please follow the next 1-10 steps:

1) Opening the case:

Take screws out and slip and lift up top cover to take off.

2) M/B Installation:

Remove the PCI card clamp holder first.
Check motherboard's mounting position, install the metal standoffs into mounting plate. Install spacer into motherboard.
To mount motherboard onto the mounting plate

3). Power Supply Installation

PS2 power supply: To place the power supply on position and tighten the back of power supply with (3) screws.

Mini redundant power supply: To screw off the bracket for PS2 power supply.

Place power supply on position and tighten the back of power supply with (4) screws.

4) 5.25"CD ROM assembly

Loosen (4) screws, pull backward and lift up the 5.25"driver bracket. To remove the metal cover, Install CD-ROM from front side, mount CD-ROM into the bracket.

5) HDD assembly

Loosen (4) screws from right side of chassis.

Remove the 5.25" driver bracket and its right ass'y kits.

To screw off (2) screws of HDD bracket. Lift out the HDD bracket.

Mount HDD into the bracket.

Assemble the HDD bracket with (2) screws on the top side of bracket and (4) screws from right side of chassis.

3.6. FDD (or HDD) installation

Under the 5.25"driver bracket, there is a FDD bracket, which allow to mount FDD or HDD.

Screw off the FDD bracket and pull it backward.

Mount FDD or HDD with (4) screws in correct position.

Slide the FDD bracket into 5.25" bracket.

7. FDD (or HDD) installation

The vertical FDD bracket allows HDD or FDD assembly.

To screw off the FDD bracket, pull backward the bracket.

Mount FDD (or HDD) into the bracket with (4) screws.

Slide the bracket in its position and tighten it with (1) screw.

8. Cooling fan Dis/Assembly

One 9cm ball bearing fan is mounted as standard package. Screw off (2) screws on the top of fan holder. Lift up the fan holder. Assemble cooling fan with (4) screws.

9. Add-on-card installation

Remove the bracket of tailgate, Install add-on-card.

To avoid shock of add-on-card, a clamp could be fixed in the best position, there are two position could be chose.

Fix the clamp on the best position for add-on cards with (2) screws.

Adjust the holder's hi-low by thumbscrew.

10. Cleaning of fan filter

Open the front door by key. Slide out the fan filter for cleaning.

CODE:ZZ17-R4202-A

